

BHS takeoff

16th Annual - BHS Users Group Meeting and Training Seminar Tour – This year we will have a whole new format to our seminars. We will be meeting for one day only. The seminar will still cover all the operations of the BHSestimator with special emphasis on new features. We have two locations chosen so far. If attendance warrants more seminars we can expand the location list to match the locations of those wanting to attend. Registration Form below.

October 14, 2011 – Kansas City, MO – Mark One Electric Training Facility - 1109 East 9th Street, Kansas City, MO
 October 21, 2011 – Memphis, TN – Exact location to be determined

Recent BHS Program Revisions

Here is a list of revisions to the program since the February newsletter. The most recent version is V6.0.7.7 dated July 2011.

- Added Color and Text Formatting buttons for Worksheets

The screenshot shows the BHS Estimator software interface. The title bar reads "BHS Estimator for Windows(C) - New Estimate". The menu bar includes "File", "Options", "Goto", "Edit", "Database Utility", and "Help". The toolbar contains various icons, with the "Color" button (represented by a paintbrush icon) circled in red. Below the toolbar, there are tabs for "Title", "Recap", "Worksheets", "Job Factors", "Labor Distribution", "Job Expense", "Summary", "Job Details", "Images", and "Job History". The "Worksheets" tab is active, showing a "Takeoff" job with "Job Name:" and "Location: New Page1". A table of materials is displayed with columns for BHS, DB #, Material Description, Quantity, Cost, MUI, Extended Cost, Labor Hours, and L. The table contains 11 rows of material data. Below the table, there is a summary section for "Sheet 1" showing "Material" costs of \$3.13, "Labor" of 0.37 (Bid), and "Extender" costs of \$3.29, totaling \$6.99. The status bar at the bottom shows "C=1 : L=1".

BHS	DB #	Material Description	Quantity	Cost	MUI	Extended Cost	Labor Hours	L
1	I 1842	EM-1/2 EMT-CONDUIT	1.00	\$21.46	C	\$0.21	3.75	C
2	I 1862	EM-1/2 EMT-90-ELLS	1.00	\$1.39	E	\$1.39	0.09	E
3	I 1920	EM-1/2 COMP COUP C	1.00	\$0.37	E	\$0.37	0.00	C
4	I 1940	EM-1/2 COMP CONN C	1.00	\$0.28	E	\$0.28	9.00	C
5	I 1980	EM-1/2 SET SCREW COUP	1.00	\$0.19	E	\$0.19	0.00	C
6	I 2000	EM-1/2 SET SCREW CONN	1.00	\$0.16	E	\$0.16	6.00	C
7	I 512	BU-1/2 PLASTIC BUSHING	1.00	\$0.06	E	\$0.06	4.00	C
8	I 3866	HA-1/2 MINERALLAC	1.00	\$0.26	E	\$0.26	5.00	C
9	I 8188	WC-THHN-STRA #12	1.00	\$206.92	M	\$0.21	5.25	M
10	F	All-Fields Line	1.00	\$0.00	E	\$0.00	0.00	E
11								

- Added a Color Worksheet printout options to the WS Printout.

The BHS, Inc.

4618 S. 156th Road – Bolivar, Missouri 65613 - Phone (800) 491-0868 - Federal ID 48-1097436

- Print and Report Fixes: Fixed bug where Print Preview printer selection did not always match the printer selecting under FilePrinter Setup. We combined the Cover Pages and WS print, so all are in the same output file. There is only one Quick Report or pdf instead of many. This means that when you are previewing an estimate, you only have to print or close the file once instead of once for each page of the estimate.
- Recap Page Changes: Made Recap Page Printout a Rich Text print, so we could add color and bolding. We added Extended Recap Printout to show Raw, Extended and Complete numbers on each page and reformatted Recap printout to allow for larger material and labor numbers.

Extended Recap Print

Estimate Report

Estimate:

08/09/11 8:53:08 AM

Estimated by: Rick Barnhouse

File: Takeoff0811 Newsletter.bhs

Page 1

Recap Page

WS A T Description/Location	Raw Material	Raw Labor	Ph	\$/SqFt	Hrs/SqFt
1 Y R New Page1	\$3.13	0.37	0	\$0.00	0.00
Extended Totals: Material	\$3.29	Completed Raw Material: \$0.00			
+ Labor	\$3.70	Completed Raw Labor: 0.00 Hours			
Total Each	\$6.99				
<hr/>					
2 Y R Big Numbers	\$152,407,296.15	15233730.00	0	\$0.00	0.00
Extended Totals: Material	\$160,027,660.96	Completed Raw Material: \$0.00			
+ Labor	\$152,337,300.00	Completed Raw Labor: 0.00 Hours			
Total Each	\$312,364,960.96				
<hr/>					
3 N R Inactive Sheet	\$1,000.00	1000.00	0	\$0.00	0.00
4 Y R Sheet4	\$0.00	0.00	0	\$0.00	0.00
Extended Totals: Material	\$0.00	Completed Raw Material: \$0.00			
+ Labor	\$0.00	Completed Raw Labor: 0.00 Hours			
Total Each	\$0.00				

Estimate Report

Estimate:
Estimated by: Rick Barnhouse
File: Takeoff0811 Newsletter.bhs

08/09/11 8:55:27 AM

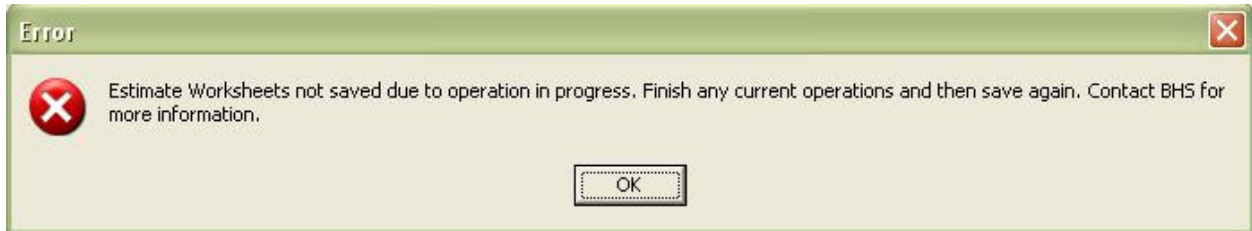
Recap Page

WS	A	T	Description/Location	Mult	Material	Labor Hrs	Ph.	\$/SqFt	Hrs/SqFt
1	Y	R	New Pagel	1.00	\$3.13	0.37	0	\$0.00	0.00
2	Y	R	Big Numbers	1.00	\$152,407,296.15	15233730.00	0	\$0.00	0.00
3	N	R	Inactive Sheet	1.00	\$1,000.00	1000.00	0	\$0.00	0.00
4	Y	R	Sheet4	1.00	\$0.00	0.00	0	\$0.00	0.00
5	Y	R	Sheet5	1.00	\$0.00	0.00	0	\$0.00	0.00
6	Y	R	Sheet6	1.00	\$0.00	0.00	0	\$0.00	0.00

Raw Material = \$152,407,299.28 Completed Raw Material = \$0.00
Raw Labor = 15233730.37 Hours Completed Raw Labor = 0.00 Hours
Quote/Subs Total = \$0.00 Completed Quotes = \$0.00

Extended Material = \$160,027,664.24
Extended Labor = \$152,337,303.70
Estimate Total = \$312,364,967.94

- Numbered F-Lines: Took Unnumbered F-lines into account when converting DOS estimates. Fixed F-Line import with numbered F-lines from Paste Special (Excel) Fixed F-Line import from Assemblies to assure non-numbered F-Lines
- Fixed problem of exiting the worksheet in the middle of a line edit causing the file to not be savable.



This condition used to be corrected only by going back to the worksheet and completing an operation before the file could be saved and before the user could exit the *BHSEstimator*. This operation is now handled automatically and prevents data loss.

- Added routines to read in a takeoff generated by On Center Software's On-Screen Takeoff (assuming of course that you have On-Screen Takeoff installed on your machine).



Accessing the On-Screen Takeoff speed button brings up the following screen:

Current Database C:\OCS Documents\OST\Projects.mdb
 Project Name Electrical - Southeastern Agency

Total Projects 4
 OST Qty Field 1
 OST Sort Order Number
 Sort Ascending
 Include Typical Group Totals

Takeoff Item Listing

Duplex	49.00	EA
Test Typical Group 1	3.00	EA
Dbl Duplex	3.00	EA
Sgl Switch	24.00	EA
Fixture Type A	41.00	EA
Fixture Type B	73.00	EA
Fixture Type C	1.00	EA
Fixture Type D	7.00	EA
Fixture Type E	6.00	EA
Fixture Type F	2.00	EA
Fixture Type G	7.00	EA
Fixture Type H	4.00	EA
Fixture Type J	4.00	EA
Fixture Type K	1.00	EA
DEL-SWL I/S RES 1G FUR	4.00	EA
Fixture Type M	3.00	EA
200 MLO, 120/240	4.00	EA
3/4" EMT Conduit	1543.00	LF
1" EMT Conduit	425.00	LF
Tele/Data Stub Ups	68.00	EA
3 Way Switch	8.00	EA

Import Method
 All One Page Pages
 Zones Areas

Starting Page
 30 E601 Elec Fixture/Panel Schedule

Ending Page
 26 E101 1st Flr Power Plan

Get Project Data **Read into Estimate** OK Cancel Help

The user simply clicks the Get Project Data button to retrieve the data from the On-Screen takeoff software, sets the import options, and clicks Read into Estimate. The On-Screen Takeoff software allows the user to count and takeoff the job and match takeoff items to BHS numbers. Once read into *BHSestimator*, the job can be managed as any other *BHSestimator* job.

BHS, Inc is now an Integrated Business Partner with On Center Software and is licensed to sell the On-Screen Takeoff package. You may view demos and screen shots of their software at <http://www.on-screentakeoff.com/>. Please contact BHS, Inc. directly for pricing and further information regarding this product.

Seminar News

On Friday morning, Rick will still spend time going over every feature in the program and answering your questions. As always, we attempt to be audience driven. We want to teach what you want to learn. So, please bring your questions and concerns. You can even send them to us ahead of time, and we will be sure to cover them at the seminar.

Friday afternoon, we will finish up any unresolved items and do a complete demonstration of the *BHSestimator* link to On-Screen takeoff. We did a preliminary demonstration at the 2010 seminar and the users were very favorable.

The cost of this year's seminar is only \$100. Seating is limited to 50 for the Kansas City conference.

Registration Form

Number of attendees: _____

Seminar location: __ Kansas City __ Memphis

Company Name and Address:

Email address for confirmation:

Names of those attending (to appear on badge and certificate: please print neatly):

_____	_____
_____	_____
_____	_____
_____	_____

Please reply to this email and fill out the form above to register. You will be sent a confirmation, an invoice, full details, and a schedule of events. Alternately, you can print and fax this form to (417)777-8519.

Thank You!

Thank you so much for your choice to continue using the *BHSestimator* over these past years and for continuing with us into the future. Please email any comments or suggestions to support@bhsestimator.com or call our new toll-free number at (800) 491-0868.